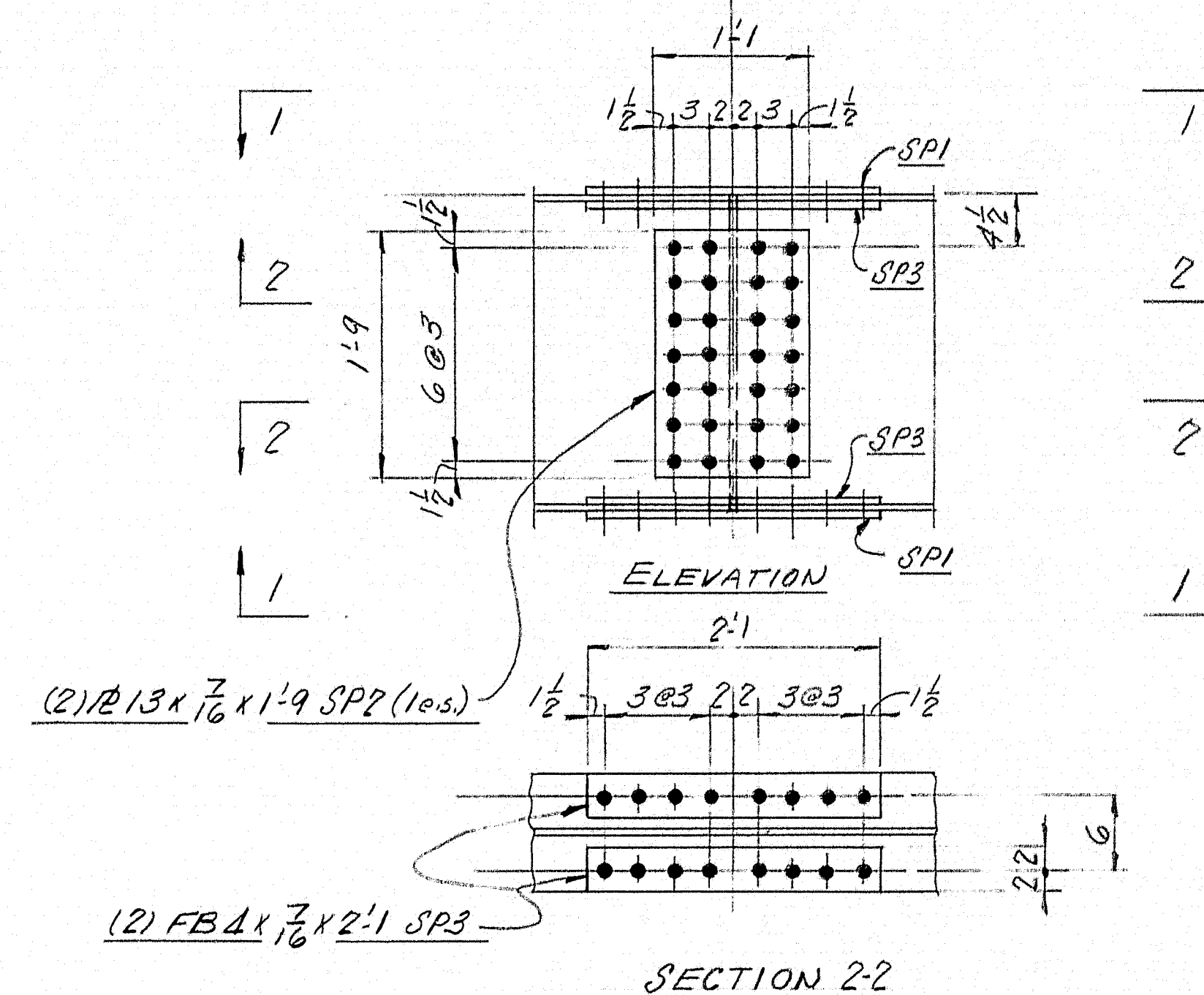
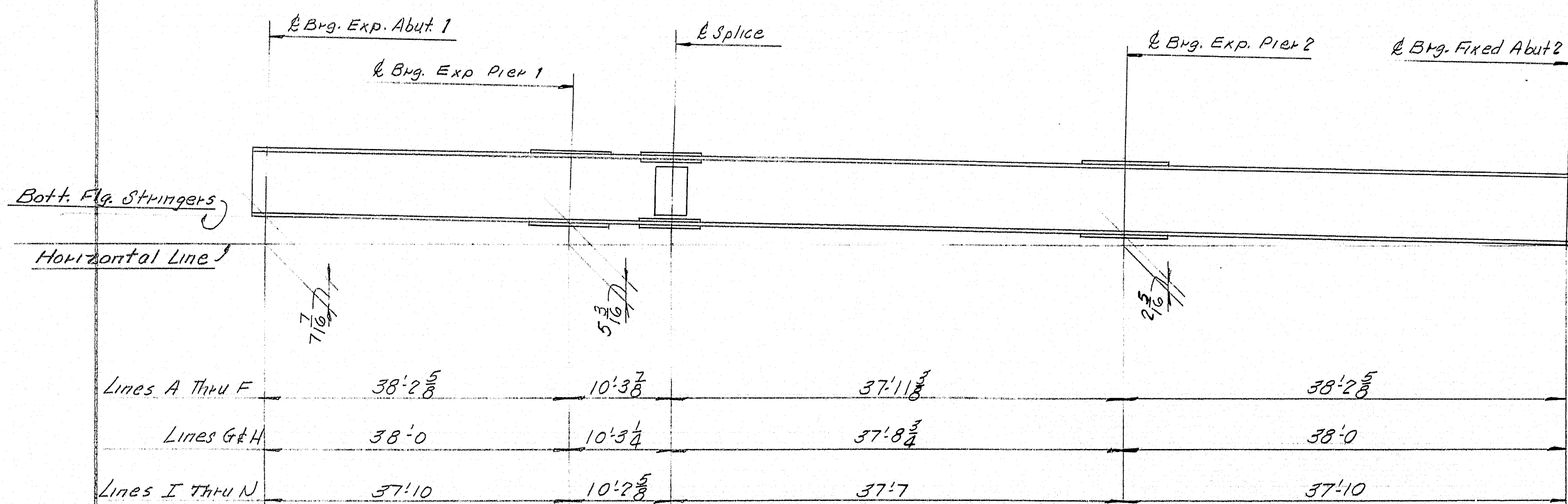


DIAPHRAGMS
 13 # Holes in Diaphragms & Conn. Pl's for 5/8" x 0'-1 1/2" M. Bolts.

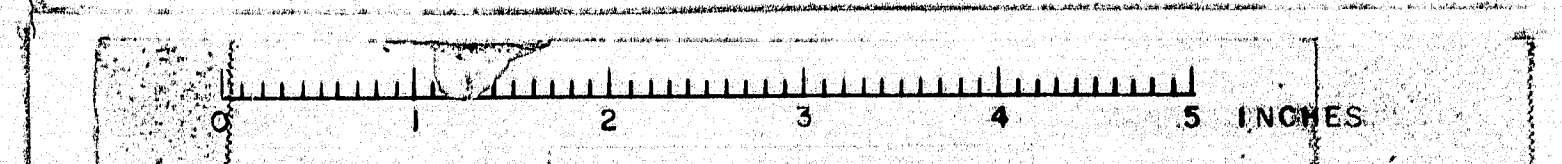


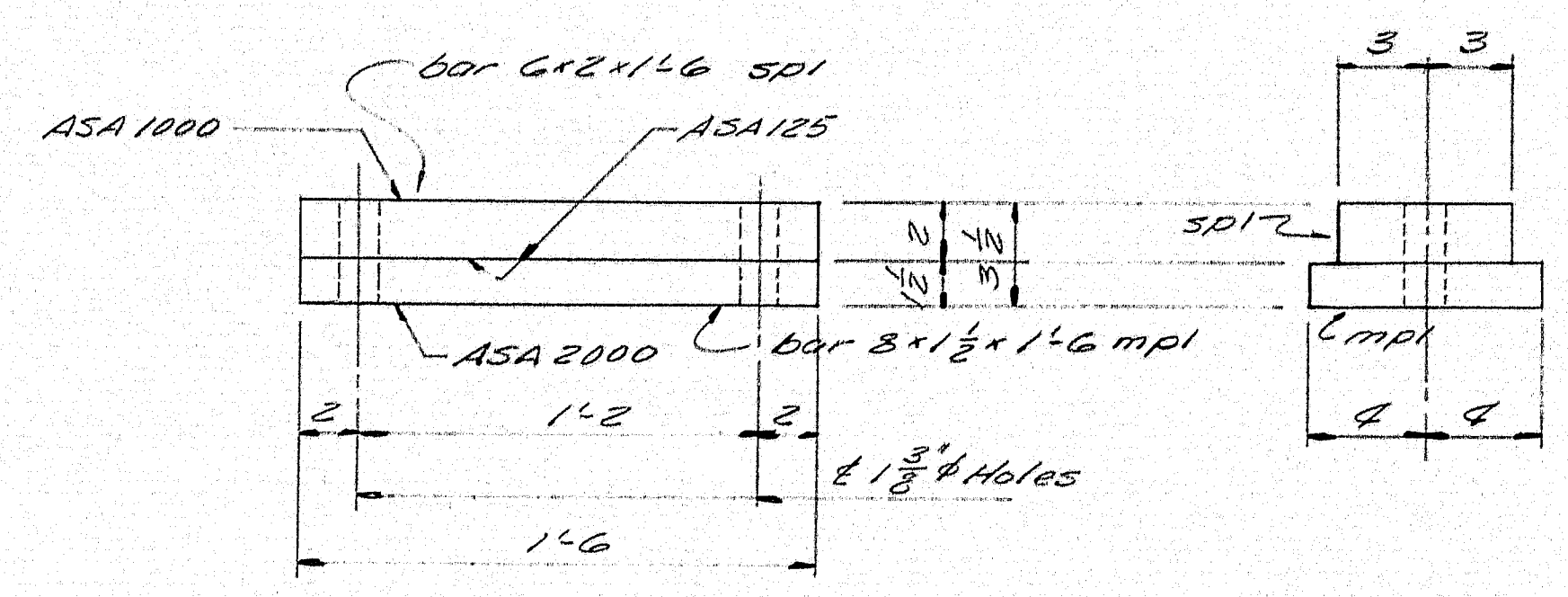
SPLICE DETAILS
 FIELD CONNECTIONS H.S. BOLTS: 5/8" x 0'-3" @ Top & Bott. Flg. of 27W84 & @ Web of all stringers.
 5/8" x 0'-3 1/4" @ Top & Bott. Flg. of 27W94

ERECTION DETAIL FOR STRINGER & SPLICE
 No Camber Req'd. in Stringers (Place natural camber up.)

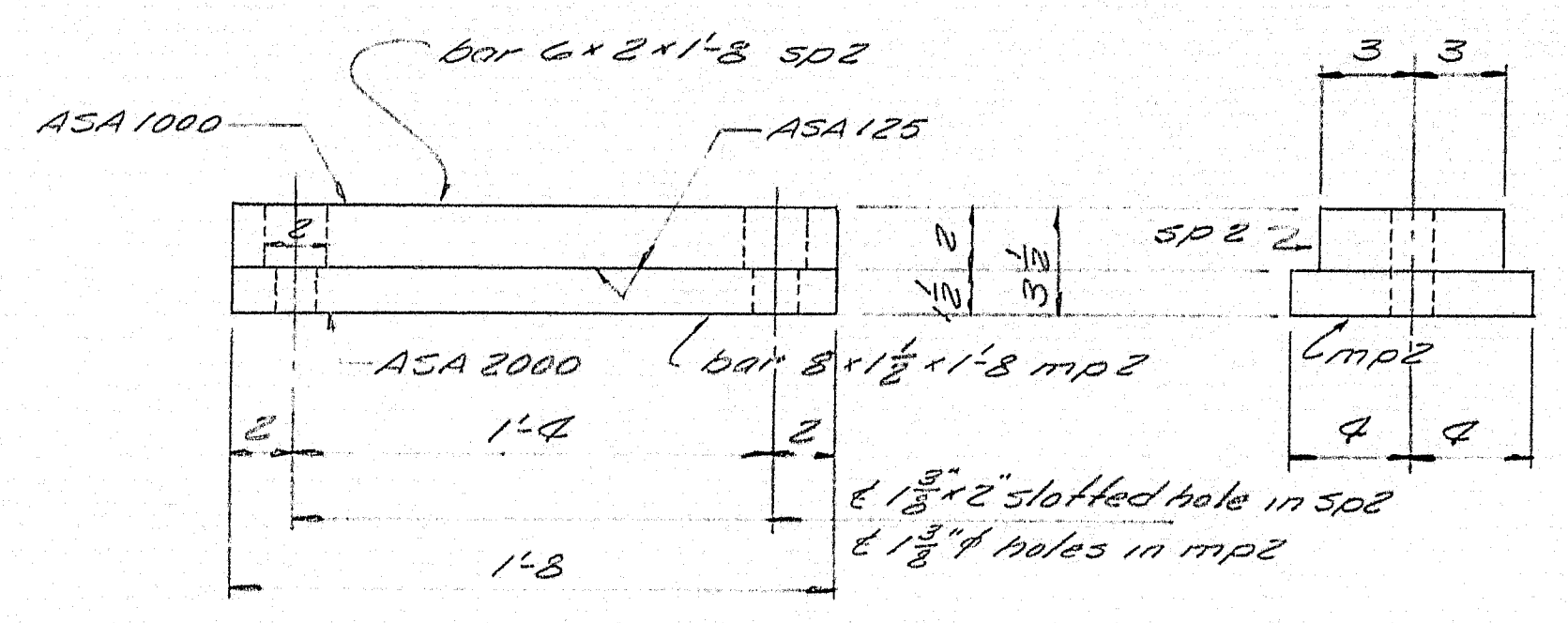
| | |
|--|------------------------|
| ERECTION & SPLICE DETAIL | |
| Barnes & Martin Rolling Mills Company South Portland 7, Maine | |
| INTERSTATE 95 OVER MAINE CENTRAL RAILROAD FAIRFIELD, ME. | |
| CUSTOMER | ELLIS SNODGRASS |
| DESIGNER | M.S.H.C. (BRIDGE DIV.) |
| ORDER NO. | VERBAL |
| DWG. NO. | 63-6-E2 |

VWAG

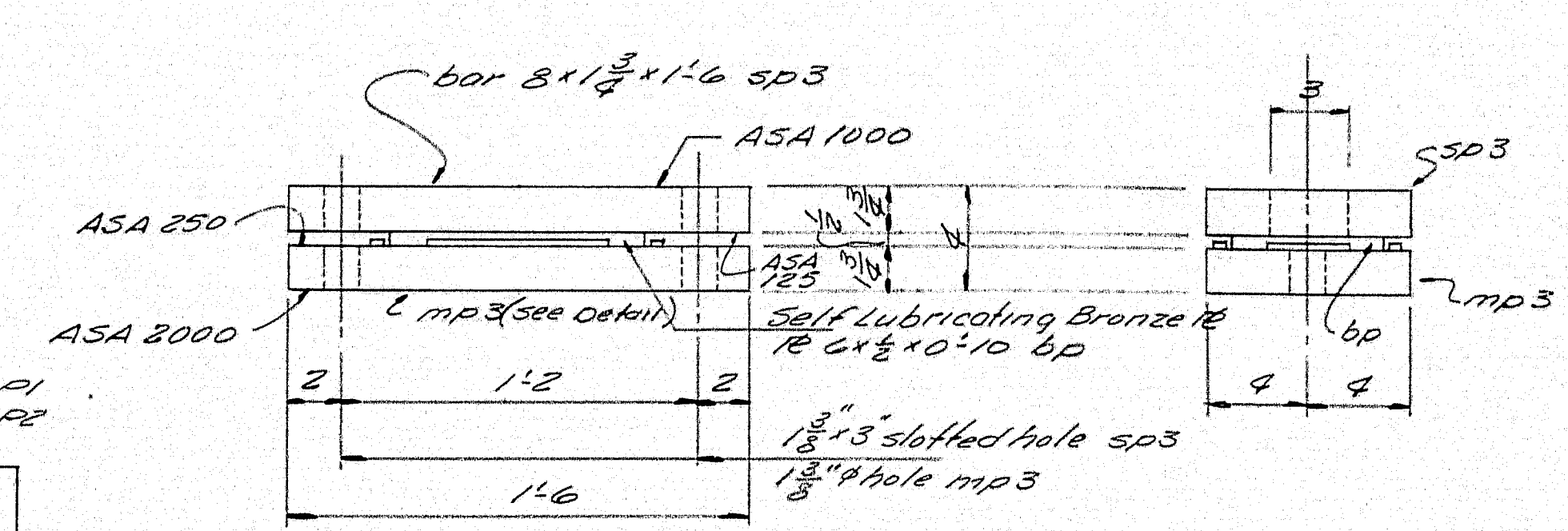
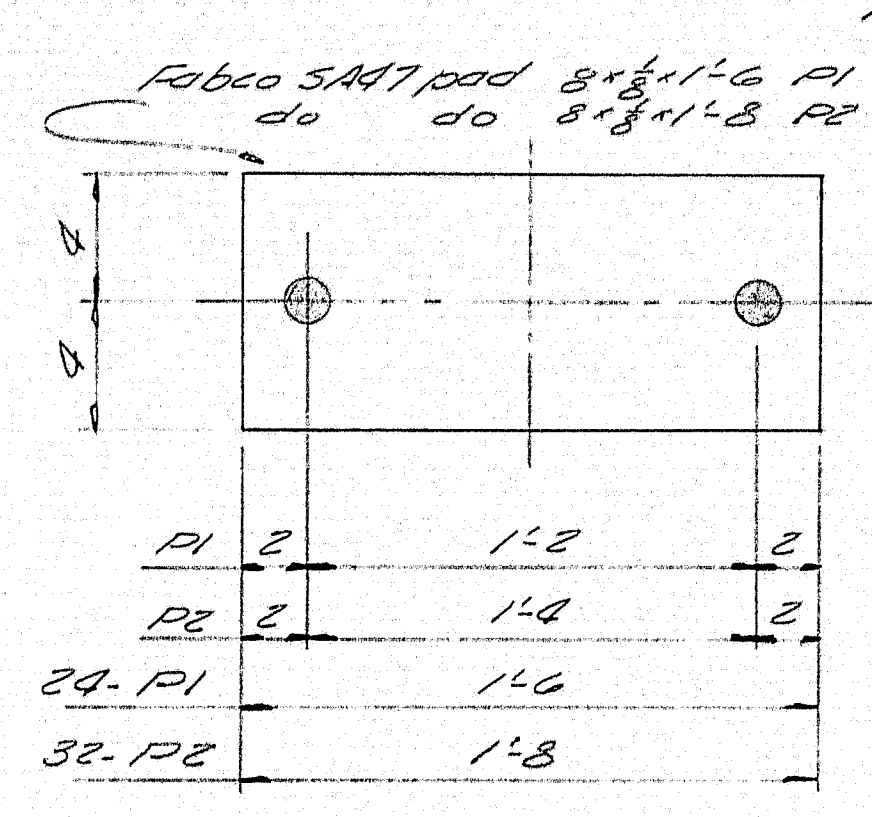




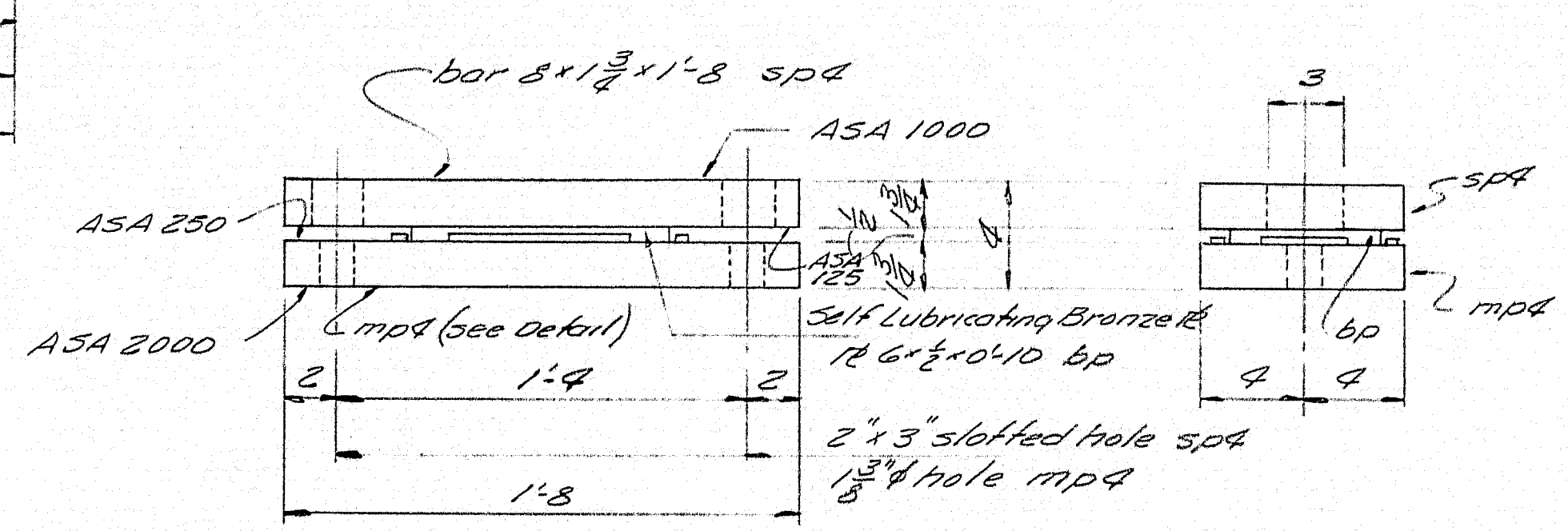
FIXED BEARING
FB1 6 REQD.



FIXED BEARING
FB2 8 REQD.



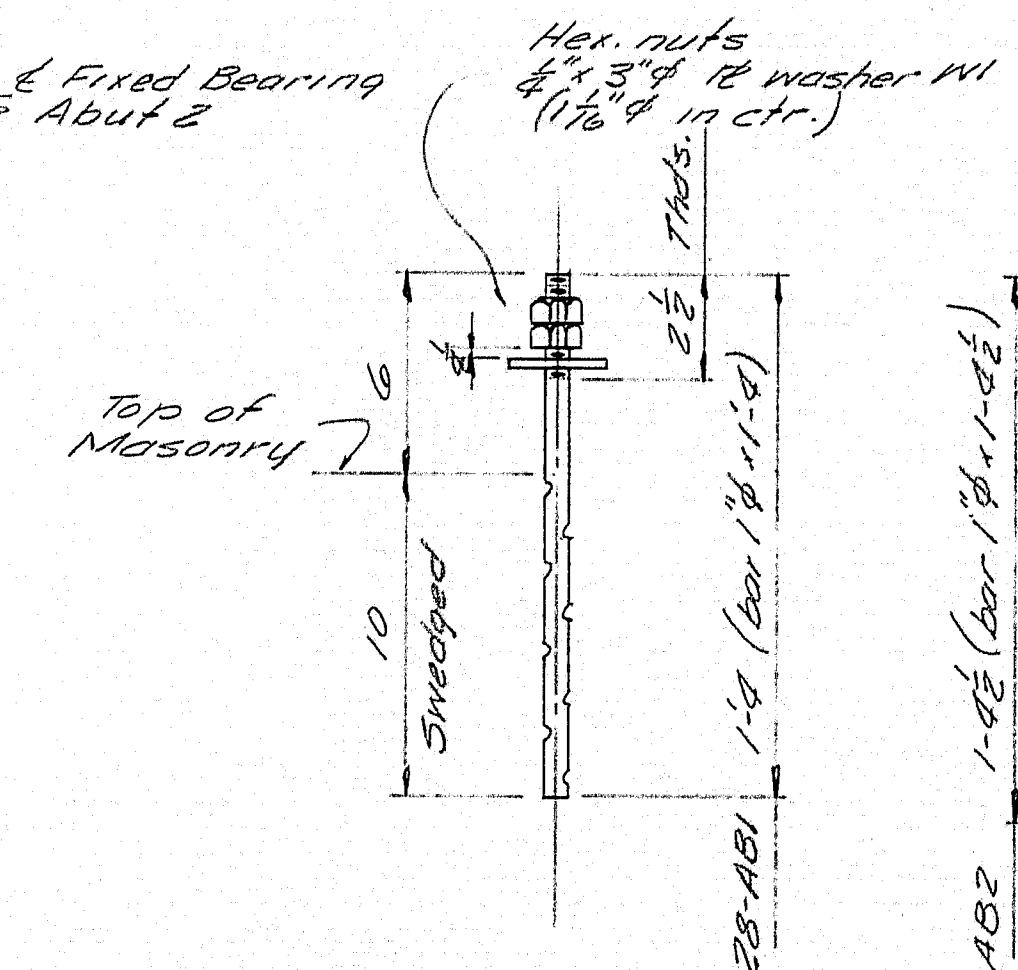
EXPANSION BEARING
EB1 18 REQD.



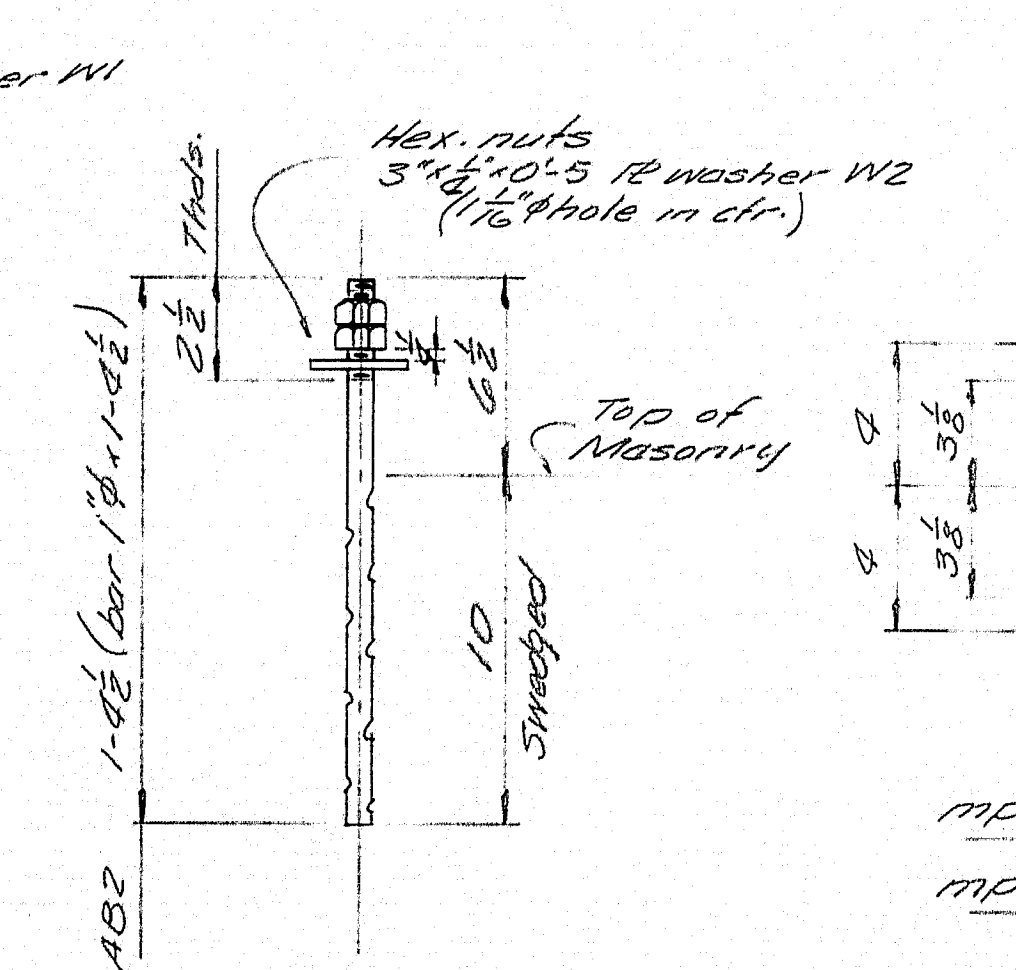
EXPANSION BEARING
EB2 24 REQD.

| | Exp. Bearing Abut 1 | Exp. Bearing Pier 1 | Exp. Bearing Pier 2 | Fixed Bearing Abut 2 |
|--------|---------------------|---------------------|---------------------|----------------------|
| Line A | EB2 | EB2 | EB2 | FB2 |
| Line B | EB2 | EB2 | EB2 | FB2 |
| Line C | EB2 | EB2 | EB2 | FB2 |
| Line D | EB2 | EB2 | EB2 | FB2 |
| Line E | EB1 | EB1 | EB1 | FB1 |
| Line F | EB1 | EB1 | EB1 | FB1 |
| Line G | EB1 | EB1 | EB1 | FB1 |
| Line H | EB1 | EB1 | EB1 | FB1 |
| Line I | EB1 | EB1 | EB1 | FB1 |
| Line J | EB1 | EB1 | EB1 | FB1 |
| Line K | EB2 | EB2 | EB2 | FB2 |
| Line L | EB2 | EB2 | EB2 | FB2 |
| Line M | EB2 | EB2 | EB2 | FB2 |
| Line N | EB2 | EB2 | EB2 | FB2 |

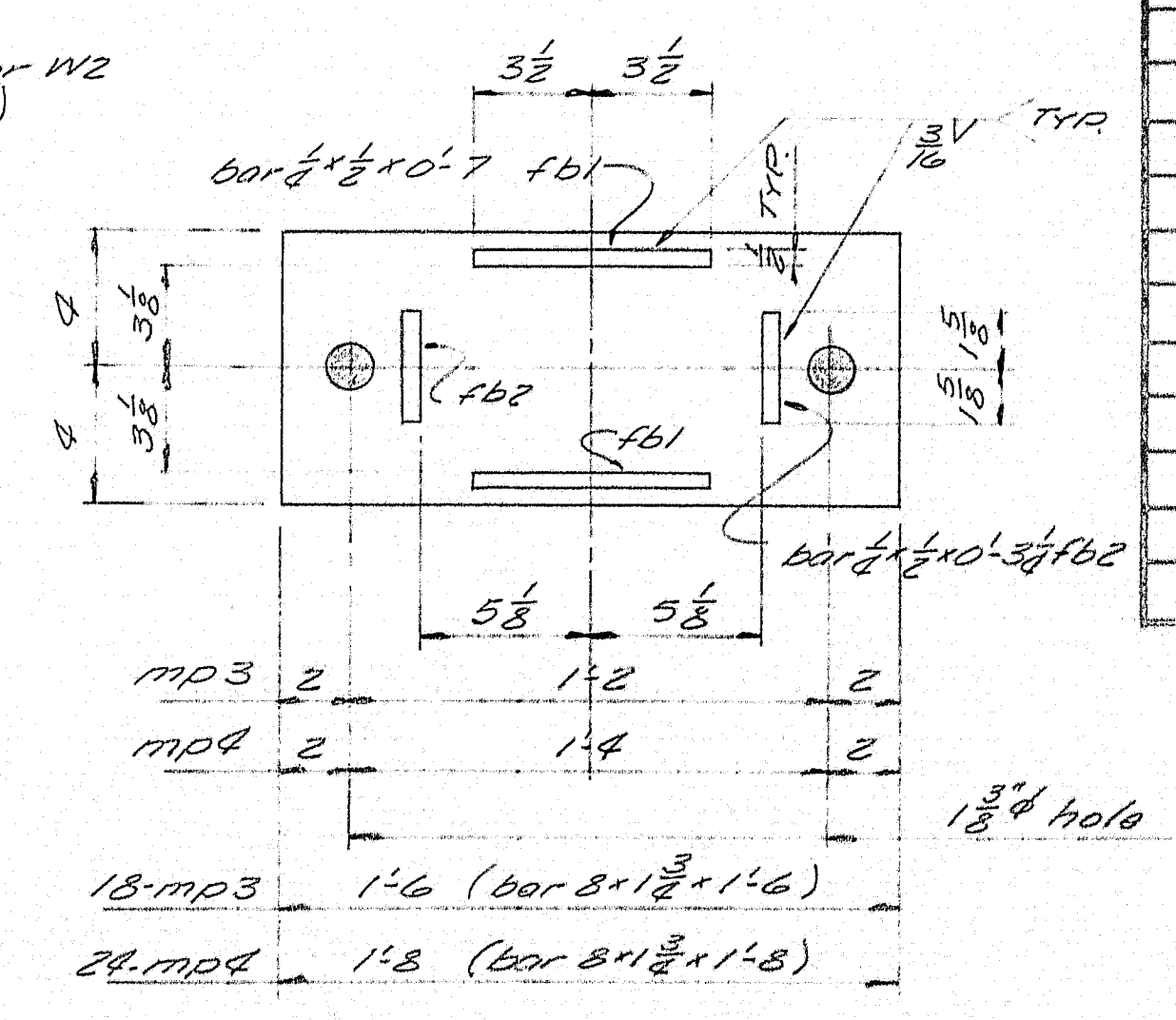
PLAN - BEARINGS



FIXED ANCHOR BOLTS



EXPANSION ANCHOR BOLTS



MASONRY PLATE mp3 & mp4

PAINT NOTE:

No paint on surfaces finished ASA 125 or ASA 250. Coat with hot mixture of white lead and tallow.
No paint on top surface sp1, sp2, sp3 and sp4.
No paint on self-lubricating Bronze Plate and areas in contact with bronze plate
No paint on anchor bolts.

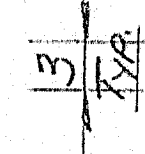
| SHIP | | BILL OF MATERIAL | | | | DWG. NO. 63-6-51 |
|---|-----|------------------|-------------------|---------|-----|---|
| MARK | NO. | MARK | SHAPE | LENGTH | WT. | REMARKS |
| FB1 | 6 | | FIXED BEARING - | | | |
| | 6 | sp1 | bar 6x2 | 1 6 | | field weld to stringer |
| | 6 | mp1 | bar 8x1 1/2 | 1 6 | | |
| FB2 | 8 | | FIXED BEARING - | | | |
| | 8 | sp2 | bar 6x2 | 1 8 | | field weld to stringer |
| | 8 | mp2 | bar 8x1 1/2 | 1 8 | | |
| EB1 | 18 | | EXPANSION BEARING | | | |
| | 18 | sp3 | bar 8x1 1/2 | 1 6 | | field weld to stringer |
| | 18 | mp3 | bar 8x1 1/2 | 1 6 | | |
| EB2 | 24 | | EXPANSION BEARING | | | |
| | 24 | sp4 | bar 8x1 1/2 | 1 8 | | field weld to stringer |
| | 24 | mp4 | bar 8x1 1/2 | 1 8 | | |
| | 84 | fbi | bar 1/2 x 1/4 | 0 7 | | |
| | 84 | fbi2 | do | 0 3 1/2 | | |
| | 42 | bp | 1/2 x 1/4 | 0 10 | | self lubricating bronze plate, Reg. #9272 |
| AB1 | 28 | | bar 1/2 | 1 4 | | swaged |
| AB2 | 84 | | do | 1 4 1/2 | | do |
| | 224 | shap | 1/2 x 1/4 | | | |
| W1 | 28 | | bar 3/4 | 0 0 1/2 | | 1/2 washer |
| W2 | 84 | | bar 3/4 | 0 5 | | do |
| PI | 24 | | Fobco 5477 | 1 6 | | Use @ Bearings FB1 & FB2 |
| P2 | 32 | | do | 1 8 | | Use @ Bearings FB2 & EB2 |
| | | | | | | Reg. #9272 |
| NOTE: | | | | | | |
| Allowance to be made for machining when cutting above plates. | | | | | | |
| ITEM 702-103A | | | | | | |

SCALE WEIGH

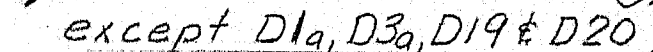
SHOP CONNECTIONS: Welded
FIELD CONNECTIONS: Welded, Bolted
HOLES: As noted
PAINT: Red lead per M.S.H.C. spec. except as noted.

| BEARINGS - ANCHOR BOLTS | |
|--|------------------|
| Bancroft W. Martin Inc. South Portland, Maine | |
| INTERSTATE 95 OVER M.C.R.R. FAIRFIELD, MAINE. | |
| CUSTOMER: ELLIS SUDGRASS DESIGNER: M.S.H.C. BRIDGE DIV. | |
| ORDER NO. Verbol | DWG. NO. 63-6-51 |

| | |
|----------|--------------|
| DRAWN | 1-10-63 H.L. |
| REVISION | |
| REVISION | |
| REVISION | |



D3 & D3a $6'' - 4\frac{1}{2}$



$1\frac{1}{2}$ TYP.

D10 5-07

No Paint 5" each end of all diaphragms.

| | | |
|----------|---------|-----|
| DRAWN | 1-21-63 | RGM |
| REVISION | | |
| REVISION | | |
| REVISION | | |

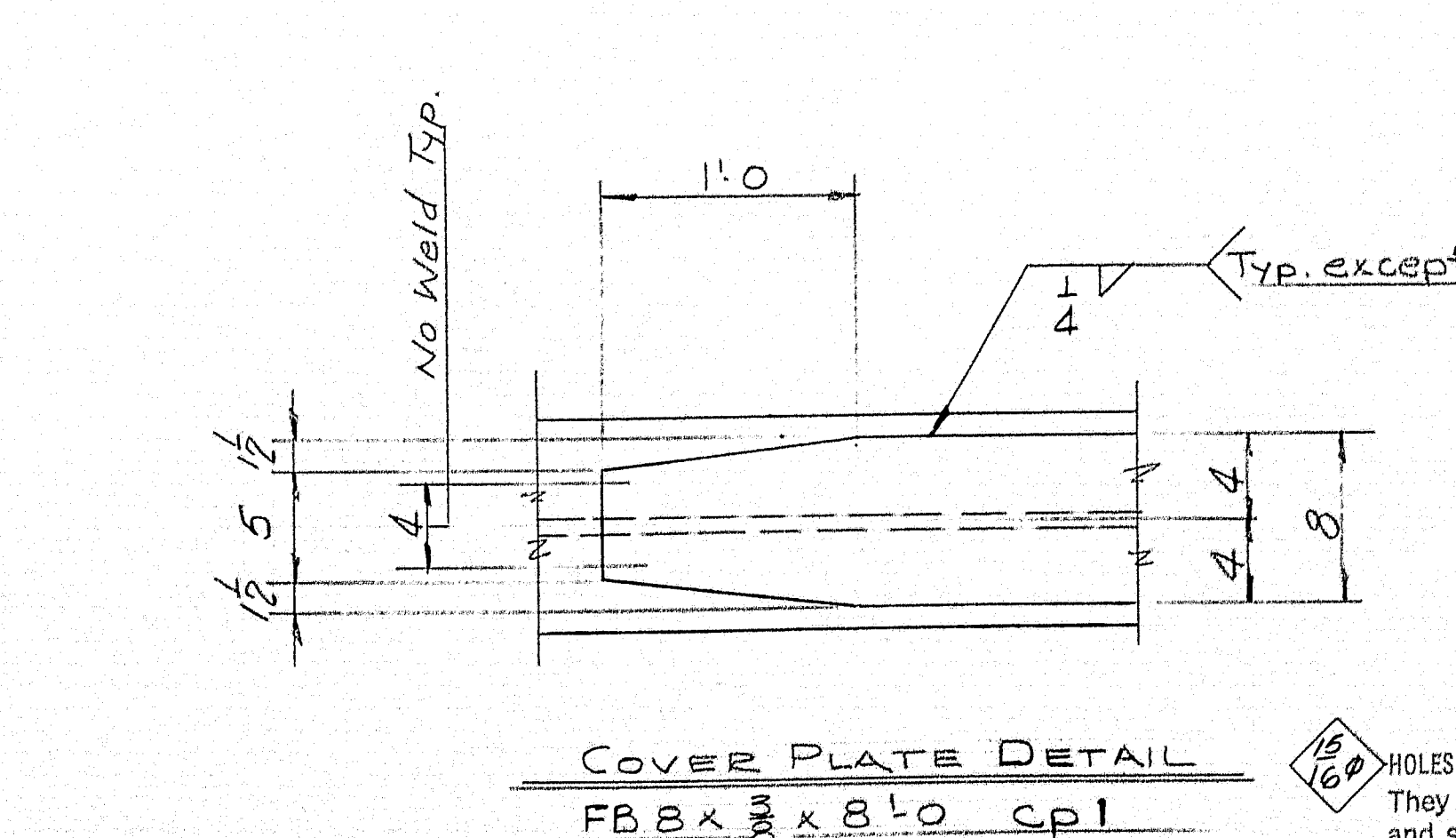
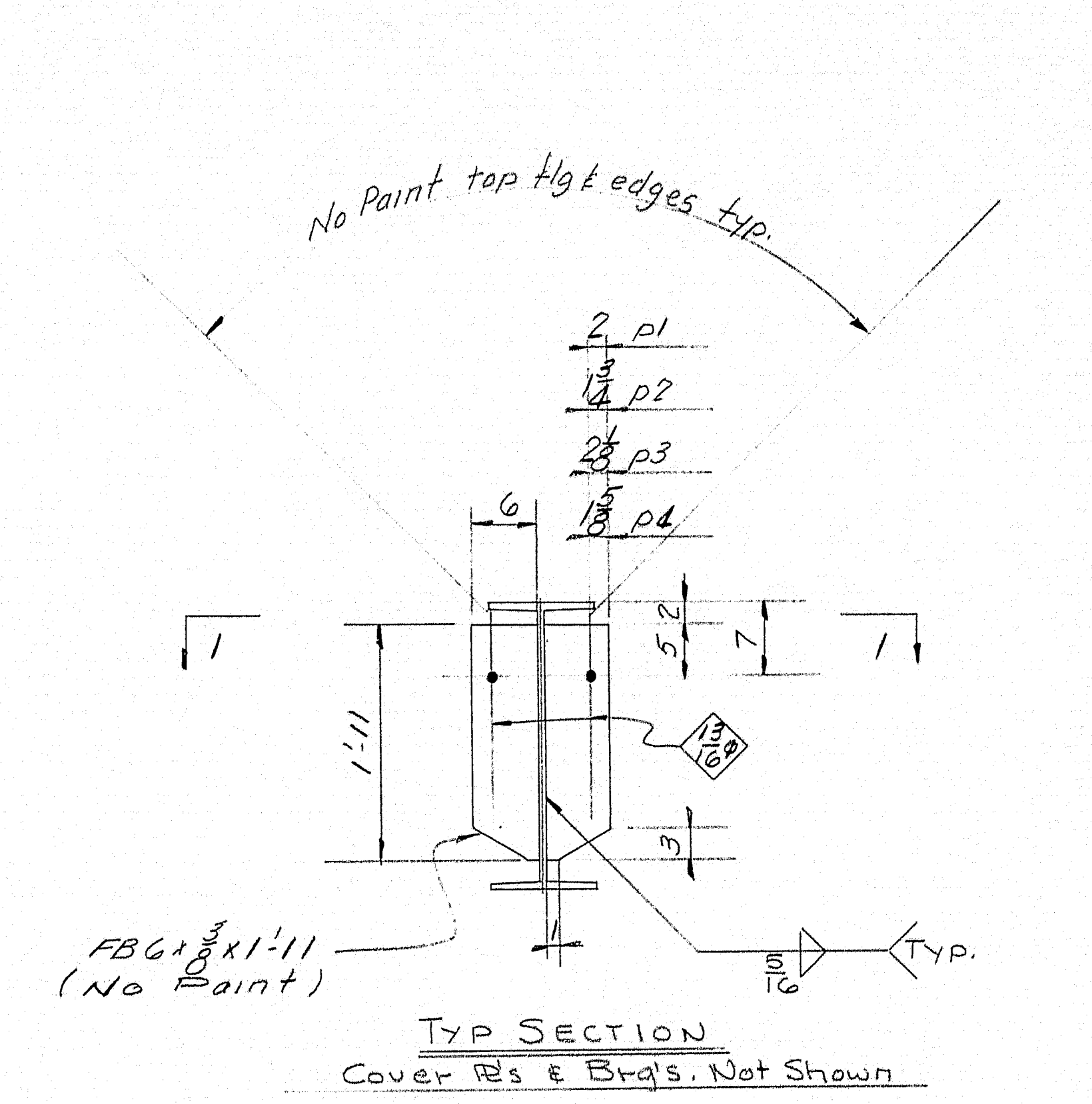
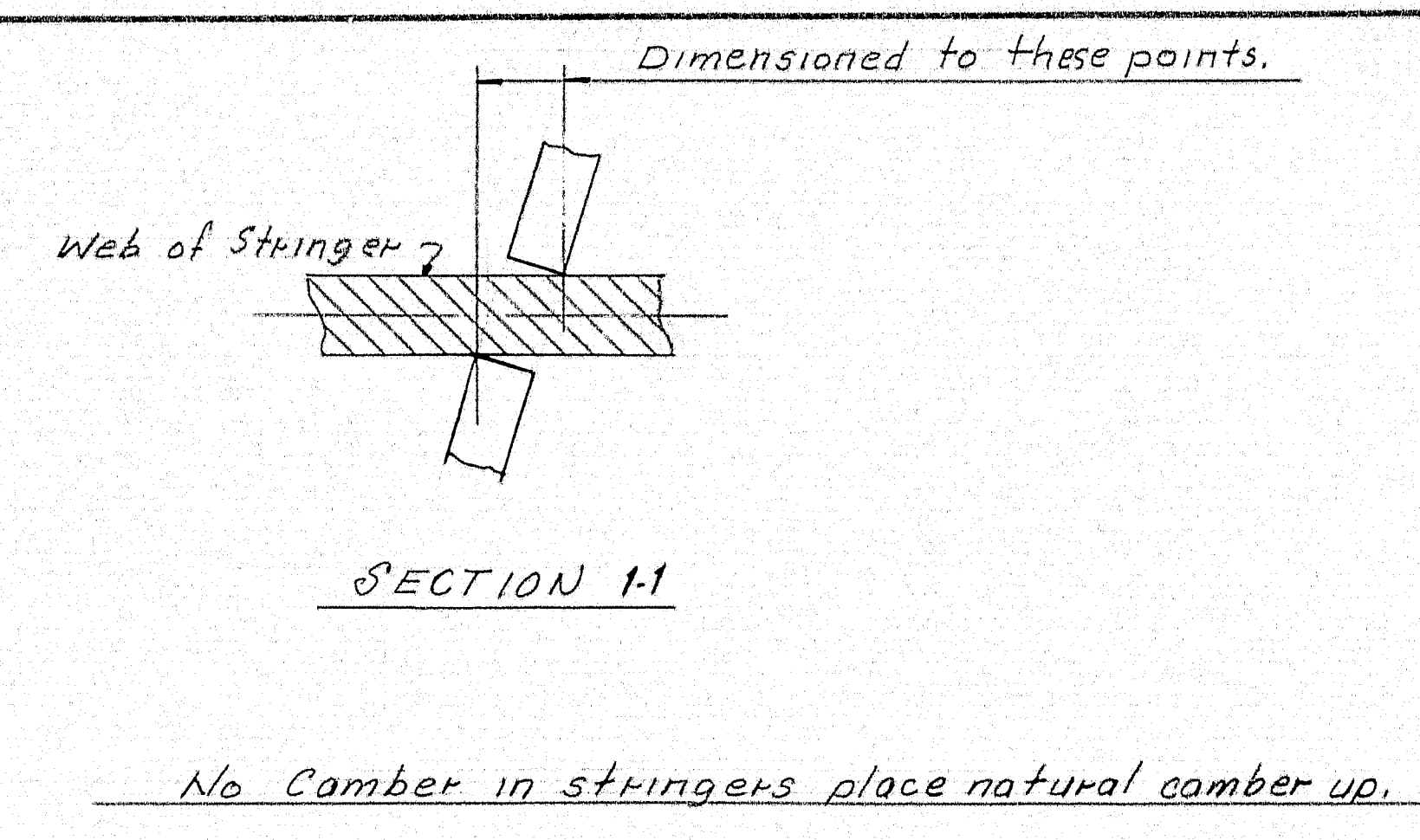
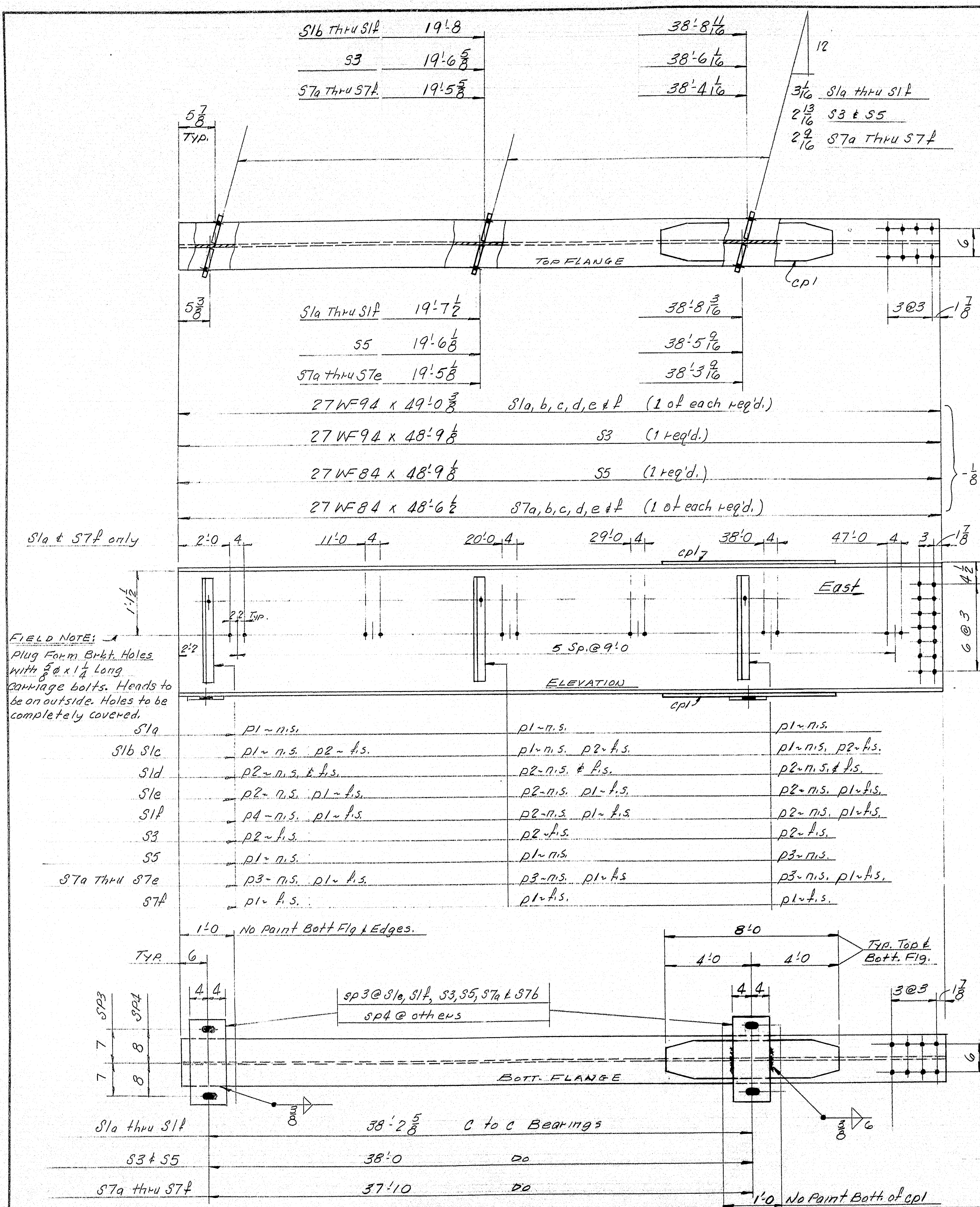
APPROVED 2-14-63

Bancroft V. Martin Inc.
South Portland 7, Maine

CUSTOMER ELLIS SNODGRASS
DESIGNER M.S.H.C. (BRIDGE DIV)

ORDER NO. VERBAL DWG. NO. 63-6-52

09-160



NOTE:
Holes in field splices of continuous beams are to be sub-punched (or sub-drilled) and reamed while assembled in the shop and connecting parts to be match marked and bolted for shipment.

| SHIP | | BILL OF MATERIAL | | | DWG. NO 63-6-33 | |
|-------|------|-------------------|--------|------------|-----------------|---------------|
| MARK | NO. | MARK | SHAPE | LENGTH | WT. | REMARKS |
| S1a | | | 27WF94 | 49'0 3/8" | | A-36 |
| S1b | | | | 49'0 3/8" | | |
| S1c | | | | 49'0 3/8" | | |
| S1d | | | DO | 49'0 3/8" | | |
| S1e | | | | 49'0 3/8" | | |
| S1f | | | | 49'0 3/8" | | |
| S3 | | | 27WF94 | 48'9 3/8" | | |
| S5 | | | 27WF84 | 48'9 3/8" | | |
| S7a | | | | 48'6 1/2" | | |
| S7b | | | | 48'6 1/2" | | |
| S7c | | | DO | 48'6 1/2" | | |
| S7d | | | | 48'6 1/2" | | |
| S7e | | | | 48'6 1/2" | | |
| S7f | | | 27WF84 | 48'6 1/2" | | |
| S2a | | | 27WF94 | 76'7 1/2" | | DO |
| S2b | | | | 76'7 1/2" | | |
| S2c | | | | 76'7 1/2" | | |
| S2d | | | DO | 76'7 1/2" | | |
| S2e | | | | 76'7 1/2" | | |
| S2f | | | | 76'7 1/2" | | |
| S4 | | | 27WF94 | 76'2 3/8" | | |
| S6 | | | 27WF84 | 76'2 3/8" | | |
| S8a | | | | 75'10 3/8" | | |
| S8b | | | | 75'10 3/8" | | |
| S8c | | | DO | 75'10 3/8" | | |
| S8d | | | | 75'10 3/8" | | |
| S8e | | | | 75'10 3/8" | | |
| S8f | | | 27WF84 | 75'10 3/8" | | |
| 56 | CPl | FB 8 x 3/8 | | 8'0" | | |
| 96 | p1 | FB 6 x 3/8 | | 1'11" | | |
| 52 | p2 | | | 1'11" | | |
| 42 | p3 | | | 1'11" | | |
| 2 | p4 | FB 6 x 3/8 | | 1'11" | | |
| SPI | 28 | P 10 x 1 1/2 | | 2'1" | | A-36 |
| SPP | 28 | P 13 x 1 1/2 | | 1'9" | | A-36 |
| SP3 | 56 | FB 4 x 1 1/2 | | 2'1" | | A-36 |
| FIELD | 192 | 3/4" N.Bolts | | 0'1 1/2" | | @ Diaphragms |
| DO | 616 | 3/4" H.S. Bolts | | 0'3" | | @ Splice |
| DO | 224 | 3/4" H.S. Bolts | | 0'3 1/2" | | @ Splice |
| DO | 1680 | 3/4" Hard Washers | | | | @ Splice |
| DO | 56 | 3/4" Cap Washers | | 0'1 1/2" | | @ Bolt. Holes |

Above Bill of Material covers Dwg. E2 & S4 also.

SHOP CONNECTIONS: Welded
FIELD CONNECTIONS: Welded & Bolted
HOLES: 1/16" except as noted
PAINT: Red Lead per State of Maine Spec's. except as noted.

STRINGER DETAILS

Rancourt V. Martin Inc.
South Portland 7, Maine

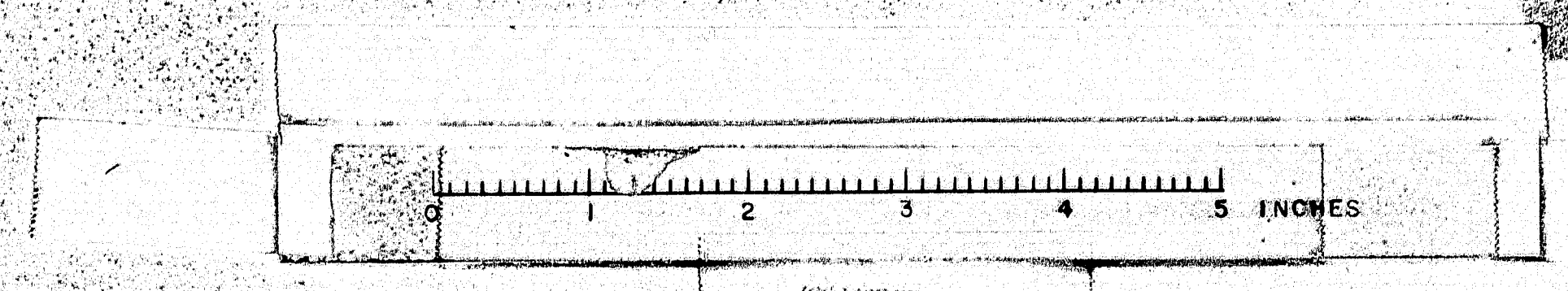
INTERSTATE 95
OVER MAINE CENTRAL RAILROAD
FAIRFIELD, ME.

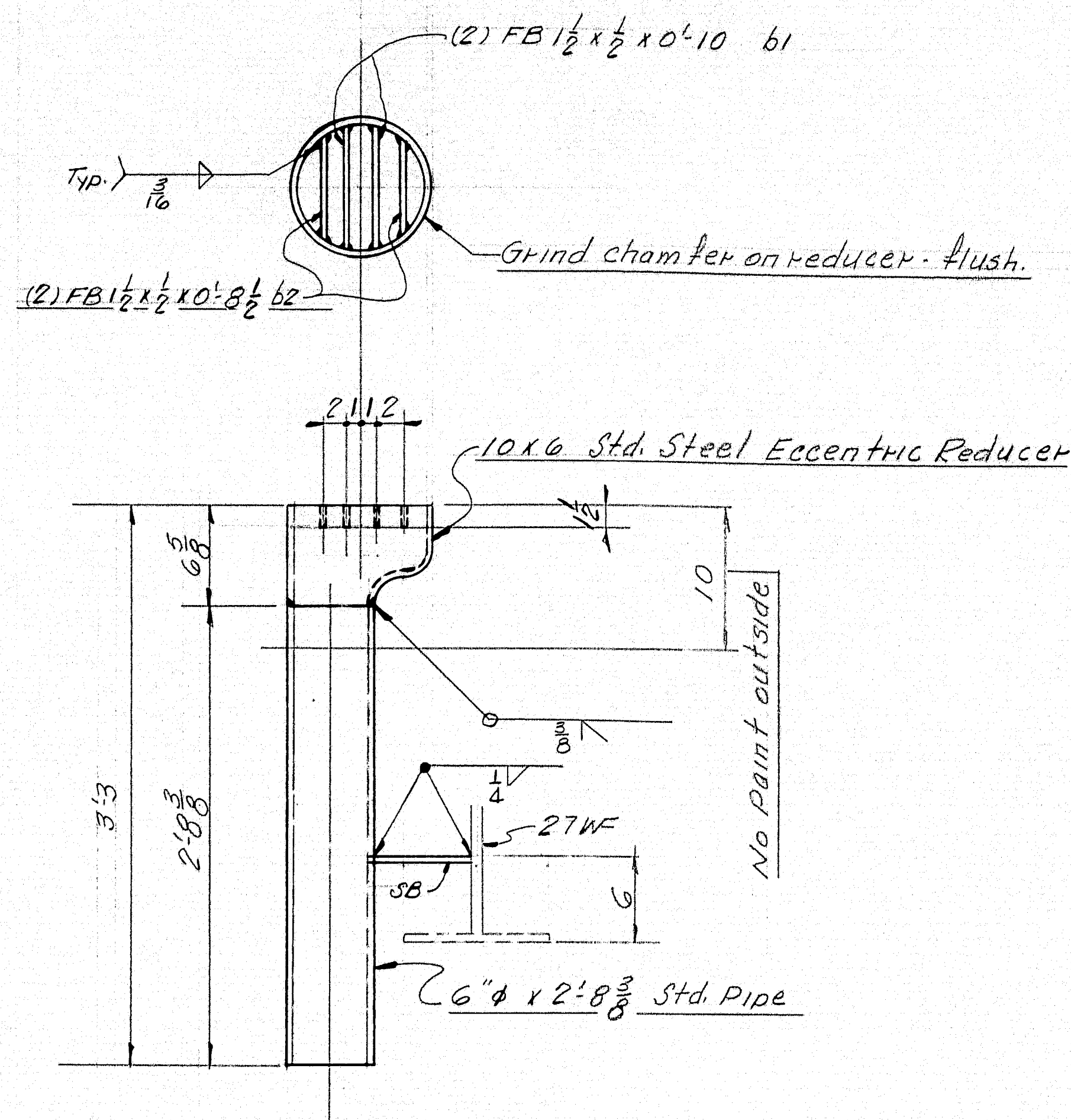
CUSTOMER: ELLIS SNODGEASS
DESIGNER: M.S.H.C. (HEIDIGE DIV.)

ORDER NO: VERBAL
DWG. NO: 63-6-33

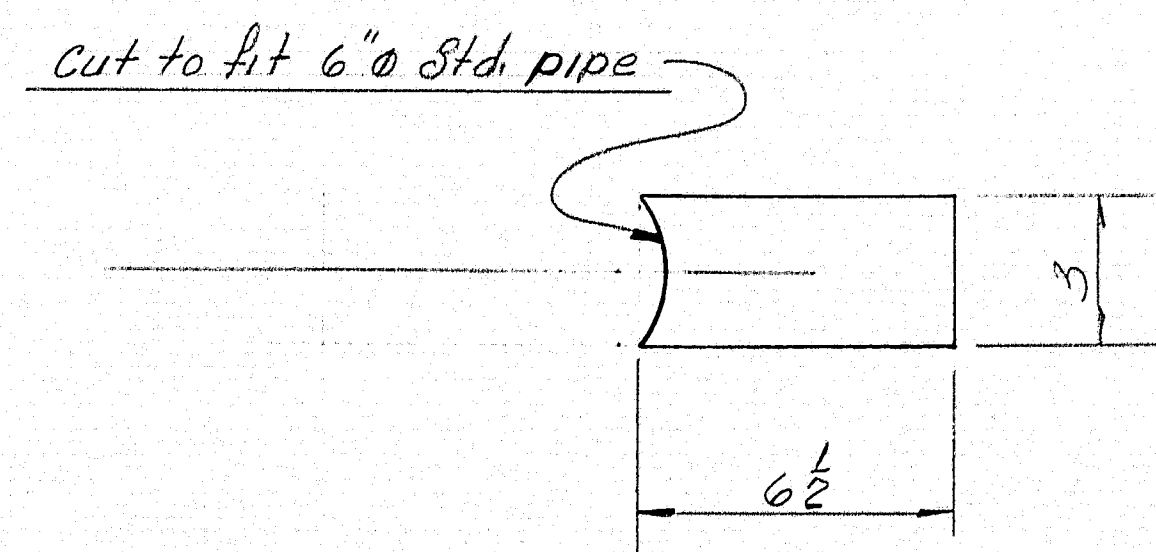
APPROVED: [Signature]
DATE: 11-5-63

DRAWN: [Signature]
REVISION: [Signature]
REVISION: [Signature]
REVISION: [Signature]





DRAIN DETAIL DRI
3 REQ'D.



STAY BAR SB
FB $3 \times \frac{3}{8} \times 0'6\frac{1}{2}$ (3 REQ'D.)

| SHIP | | BILL OF MATERIAL | | | | DWG. NO. 63-6-55 |
|------|-----|------------------|--------------------------------------|----------|-----|----------------------|
| MARK | NO. | MARK | SHAPE | LENGTH | WT. | REMARKS |
| DRI | 3 | | 6" Std. Pipe | 2'8 3/8" | | |
| SB | 3 | | FB $3 \times \frac{3}{8}$ | 0'6 1/2" | | |
| | 6 | b1 | FB $1\frac{1}{2} \times \frac{1}{2}$ | 0'10" | | |
| | 6 | b2 | FB $1\frac{1}{2} \times \frac{1}{2}$ | 0'8 1/2" | | |
| | 3 | Shop | 10x6 | | | |
| | | | Std. Steel Eccentric Reducer | | | Rep. #9269 2-5-63 |

SHOP CONNECTIONS: Welded
FIELD CONNECTIONS: Welded
HOLES: —
PAINT: Red Lead per State of Maine
Spec's. & as noted.

DRAIN DETAIL

Rancroft V. Martin Inc.
South Portland 7, Maine

INTERSTATE 95
OVER MAINE CENTRAL RAILROAD
FAIRFIELD, MAINE

CUSTOMER: ELLIS SNODGRASS
DESIGNER: M.S.H.C. (BRIDGE DIV.)

ORDER NO. VERBAL DWG. NO. 63-6-55

89-163

